

Troubleshooting

Problem: *Beer flow is slower with Perlick Coupler with EKS than with standard Perlick coupler.*

Probable Cause: Beer Flow Control Handle is in **RESET/CLEAN** position.
Solution: Slowly turn Beer Flow Control Handle to **ON** position.

Problem: *Beer does not flow after keg is tapped.*

Probable Cause: Perlick Coupler with EKS has locked up.
Solution: Turn Beer Flow Control Handle to **RESET/CLEAN** position. Wait five seconds then slowly turn Beer Flow Control Handle to **ON** position.

Probable Cause: Probe or Perlick Coupler with EKS is dirty.
Solution: Clean EKS (Empty Keg Sensor).

Probable Cause: Out of gas.
Solution: Reestablish gas flow.

Problem: *Excessive foam.*

Probable Cause: Beer temperature too high. Excessive beer flow rate. Beer is over-carbonated.

Solution: These problems are not caused by the Perlick Coupler with EKS. Follow established procedures to correct the problem.



OPERATING INSTRUCTIONS PERLICK COUPLER with EMPTY KEG SENSOR

Part No.

□ 36000F



No. 36000F
Perlick Coupler with Empty Keg Sensor

The Perlick Coupler with EKS combines a standard Perlick single-valve keg coupler with a specially-designed keg sensor that eliminates the line loss that normally follows every empty keg. Fresh kegs can be drawn off immediately. The beer lines are always full of beer.

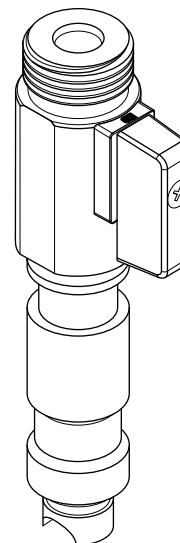
- Saves time
- Reduces beer waste
- Increases beer profits
- Reduces aggravation

IMPORTANT!

To ensure your complete satisfaction, please read these instructions before using Perlick's Coupler with EKS.

Retrofitting Single Valve Couplers

Perlick single valve keg couplers can be retrofitted to function as Perlick Couplers with EKS. Simply replace the probe with Perlick's No. 40125B empty keg sensor.



1. Remove probe washer from bottom of probe.
2. Remove retaining screw and yoke assembly.
3. Lift probe out of body.
4. Install Perlick's empty keg sensor. When replacing probe washer make sure the surface marked "UP" faces the probe washer.



Beer Flow Control Handle Operating Positions

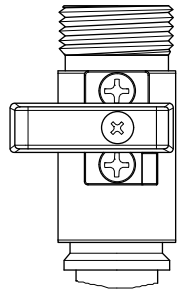


Fig. 1
RESET/CLEAN

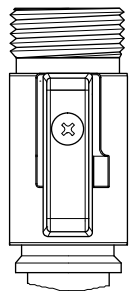


Fig. 2
ON

Filling the Lines the First Time

1. Turn Beer Flow Control Handle **RESET/CLEAN**. (See Fig. 1).
2. Tap fresh keg.
3. Open the beer faucet. When solid beer appears, close the faucet. The line is full.
4. Turn Beer Flow Control Handle **ON**. (See Fig. 2). The line is full and ready for service.

When Tapping Fresh Kegs

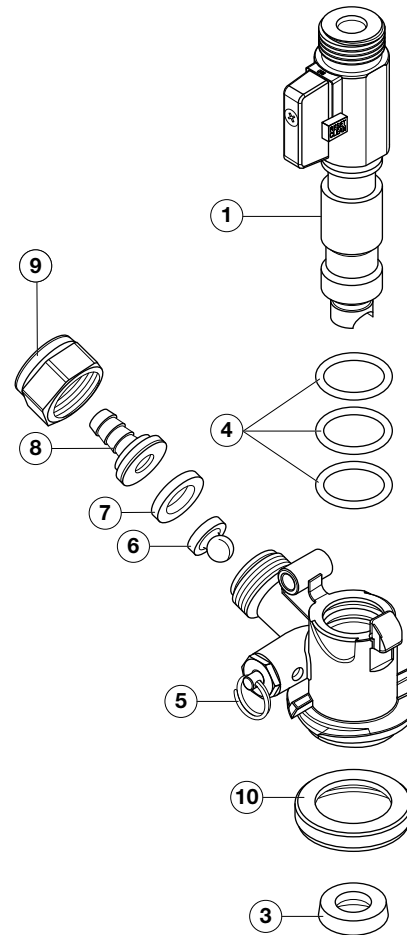
1. Remove coupler from empty keg.
2. Keep Flow Control Handle **ON**. (See Fig. 2).
3. Tap fresh keg in normal manner.
4. Turn Beer Flow Control Handle to **RESET/CLEAN** position. (See Fig. 1). Wait for five seconds then turn to **ON** position. (See Fig. 2).

To Restart System

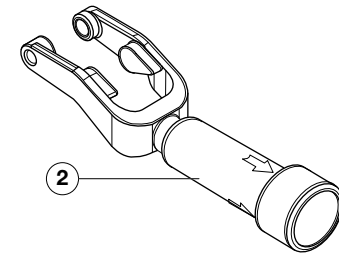
If beer does not flow, first turn the Flow Control Handle to **RESET/CLEAN**. (See Fig. 1). Wait for five seconds then turn the Handle to **ON** position. (See Fig. 2).

To Clean

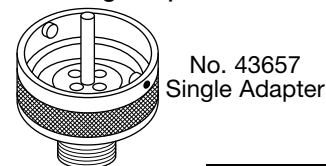
1. Untap Keg in usual manner.
2. Keep Flow Control Handle **ON**. (See Fig. 2).
3. Attach cleaning adapter. Use Perlick's single cleaning adapter, No. 43657, if cleaning from faucet to keg. If two or more lines are cleaned, use Perlick's dual cleaning adapter, No. 43681.
4. Turn Beer Flow Control Handle to **RESET/CLEAN** and clean as usual. (See Fig. 1).
5. After flushing, keep Beer Flow Control Handle in **RESET/CLEAN** position and retap keg. (See Fig. 1).
6. To restore service, see above instructions.



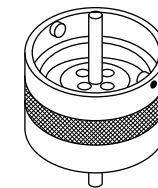
Item	Part No.	Description
1	40125B	Empty Keg Sensor
2	67042	Std. Yoke Assembly
3	31087-2P	Probe Washer
4	31089-2P	"O" Ring (3 per Assembly)
5	65800	Body
6	23682-2P	Check Valve
7	157R2P	Washer
8	2068-1	Tailpiece
9	2026	Coupling Nut
10	31088-2P	Bottom Seal Washer
11	67045-1	Retaining Screw



Cleaning Adapters



No. 43657
Single Adapter



No. 43681
Dual Adapter

Warranty

Perlick Products are fully guaranteed against defects in both material and workmanship for a period of one year from date of sale. Defective parts will be replaced on a no-charge basis, F.O.B. our factory, subject to our inspection. We are not responsible for parts damaged by alteration, unauthorized service, accident or abuse. All costs incident to replacement to include freight, labor and/or loss of sales are incidental to this warranty and must be borne by the user.

